

# OUR LADY OF MERCY CHURCH

837 Bartlett Road • Harborcreek, PA 16421 • [www.ourladyofmercychurch.org](http://www.ourladyofmercychurch.org)



## MASS SCHEDULE

Saturday Vigil: 6:00 p.m.

Sunday: 8:30 a.m. & 11:00 a.m.

Weekday: 8:30 a.m.

## MISSION STATEMENT

*We are a Eucharistic, Catholic Christian Community of Communities formed by the Word of God and the teachings of the Church. We are empowered by the Holy Spirit to live the values of Jesus Christ in a prayerful, welcoming and nurturing environment.*

## PARISH STAFF

Msgr. Gerald T. Ritchie, *Pastor*

Deacon Paul Barko, *Deacon Assistant*

Donna Clark, *Pastoral Minister*

Irene Lucas, *Director of Lifelong Faith Formation*

Patti Reavel, *Music Director*

Katie Stephenson, *Administrative Assistant  
& Youth Minister*

Kirk Mientkiewicz, *Maintenance Coordinator*

Andrea Maille, *Lifelong Faith Formation Secretary*

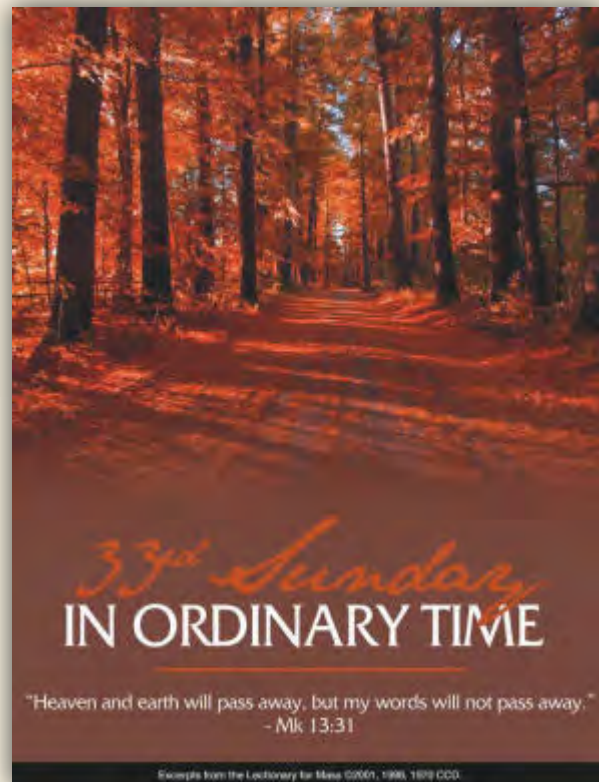
## CONTACT INFORMATION

Parish Office: 814-899-5342

Office of Lifelong Faith Formation: 814-899-6132

Fax: 814-898-3306

Email: [info@ourladyofmercychurch.org](mailto:info@ourladyofmercychurch.org)



# NOVEMBER 14, 2021 - THE 33RD SUNDAY IN ORDINARY TIME

## THE WEEK AHEAD

For a complete calendar of events, please visit [ourladyofmercychurch.org/calendar](http://ourladyofmercychurch.org/calendar)

<b>Mon. 11/15</b>	9:00 a.m.	Quilters
	9:30 a.m.	Steel Magnolias
	2:00 p.m.	Sofia's SCC
	6:30 p.m.	Fireside Chatters SCC
	7:00 p.m.	Grief Support Group
<b>Tue. 11/16</b>	1:00 p.m.	Potters Clay SCC
	2:00 p.m.	Prayer Shawl
	4:00 p.m.	Gr. 3-6 Religious Ed
	6:30 p.m.	Roman Candles SCC
	7:00 p.m.	Lifelong Faith Formation
<b>Wed. 11/17</b>	8:30 a.m.	Food Pantry Distribution
	1:00 p.m.	Diamonds in the Rough
	7:00 p.m.	OLM Book Group
<b>Thur. 11/18</b>	9:00 a.m.	Painting Class
	12:00 p.m.	Midday Prayer
	1:00 p.m.	Legion of Mary
	6:00 p.m.	Prayer Shawl
	6:00 p.m.	Barko Continuum Mtg.
	6:30 p.m.	Choir Rehearsal
<b>Fri. 11/19</b>		
<b>Sat. 11/20</b>	9:00 a.m.	PF Training
	4:30 p.m.	Sacrament of Penance
<b>Sun. 11/21</b>	9:30 a.m.	Gr. K-2&7-8 Religious Ed.
	9:30 a.m.	Healing Ministry
	2:00 p.m.	Gr. 7 & 8 Youth Event
	3:00 p.m.	HC Youth Ministry
		Thanks-gathering
	6:00 p.m.	Harborcreek Community Thanksgiving Service

## SCRIPTURE READINGS

<b>Mon. 11/15</b>	1 Mc 1:10-15, 41-43, 54-57, 62-63	/ Lk 18:35-43
<b>Tue. 11/16</b>	2 Mc 6:18-31	/ Lk 19:1-10
<b>Wed. 11/17</b>	2 Mc 7:1, 20-31	/ Lk 19:11-28
<b>Thur. 11/18</b>	1 Mc 2:15-29	/ Lk 19:41-44
<b>Fri. 11/19</b>	1 Mc 4:36-37, 52-59	/ Lk 19:45-48
<b>Sat. 11/20</b>	1 Mc 6:1-13	/ Lk 20:27-40
<b>Sun. 11/21</b>	Dn 7:13-14 / Rv 1:5-8	/ Jn 18:33-37



## PRAYER LINE

9:00 a.m.-4:00 p.m.  
Call Donna Smicker at 814-899-9108  
4:00 p.m.-9:00 p.m.  
Call Gerri Extein at 814-490-9681



## FINANCIAL SUPPORT

Offertory for the weekend of November 7, 2021

Envelopes sent:	357	
Envelopes returned:	73	\$ 4,970.70
Faith Direct Deposits:	136	\$ 3,446.08
Loose Change:		\$ 68.00
<b>TOTAL OFFERTORY:</b>		<b>\$ 8,484.78</b>

## MASS INTENTIONS

<b>Mon. 11/15</b>	8:30 a.m.	<b>Robert Jones</b> (Barb Jones)
<b>Tue. 11/16</b>	8:30 a.m.	<b>Our Lady's Intentions</b> (Todd Beckes)
<b>Wed. 11/17</b>	8:30 a.m.	<b>Mary Pfadt</b> (Gerald Pfadt)
<b>Thur. 11/18</b>	8:30 a.m.	<b>Leo Kosobucki</b> (Irene Kieklak)
<b>Fri. 11/19</b>	8:30 a.m.	<b>Cptn. Norman Schlosser</b> (Morning Mass Group)
<b>Sat. 11/20</b>	8:30 a.m.	<b>-NO MASS-</b>
	6:00 p.m.	<b>For the People of OLM</b>
<b>Sun. 11/21</b>	8:30 a.m.	<b>Irene Abbate</b> (Dr. Loren & Linda Prichard)
	11:00 a.m.	<b>Lewis Peters</b> (Carole Peters)

## THIS SUNDAY'S REFLECTION

### MARK 13:24-32

When you see these things happening, know that he is near.

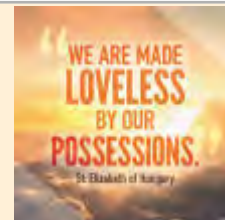
With so many natural disasters, wars, and injustices against human beings before us, and many other things that we see each day in the news, perhaps we start to question: Are these not the signs Jesus speaks of in Scripture?

All of these sorrows and woes certainly remind us that under God's reign, things would be very different. The second coming of Jesus is our greatest hope. When will it be? Only God knows his plan, and no one else.

Nevertheless, in each moment of our lives, God is always present. The invitation is to be alert and discover the symbols, the signs, that indicate God's daily and continuous presence in our lives. A certain intimacy, and burning search is needed, to be in perfect understanding (harmony) with God. God does not allow himself to be outdone in generosity. He gives hundredfold and will manifest his glory and his power by giving us a new reason to exist.

**For Reflection: What are some of the signs of God's presence in my life? Do I easily recognize the meaning of these signs?**

*Esperanza Micaela Espinoza, M.C.P.*





### Book Group

Join us on **Wednesday, Nov. 17 @ 7:00** at the home of Kay Kaeberlein to discuss The Mountains Sing by Nguyễn Phan Quế. We will begin the new year with a discussion of The Plot by Jean Hanff Korelitz. Unvaccinated members, PLEASE wear masks.



### Drumming Circle



On Sunday Dec 5 at 6:30 p.m. Our Lady of Mercy will host another Drumming Circle. Drumming calms the body and mind while reducing anxiety and stress. No experience or musical ability required. Age 12 and up invited to bring your own drum or contact Debbie by **December 1st** to reserve an instrument (text or ph: 814.397.1176). \$15 cash donation per person.

### Donor Match Money for Our Lady of Mercy

For every new parishioner who signs up for recurring monthly offertory donations through Faith Direct before **December 15th**, the Faith Direct Company will match that first gift, up to \$50 per parishioner. To be eligible for the matching gift, more than one installment must be set-up and the first recurring gift must be processed through Faith Direct by **December 31, 2021**.



### Help needed to prepare and install OLM Advent Environment

\* Several crafty/artistically inclined youth or adults to help prepare wreaths for Advent/Christmas environments. Can be scheduled throughout November. Contact Theresa Horanic as soon as possible at **814-384-6477**.

\* A few guys/gals who climb ladders and can help hang wreaths, hangings, etc. in Worship Space and Gathering Space on the Saturday after Thanksgiving (November 27th) at 9am. Contact Nancy Mowery at **814-403-6621**.

## FORMED.ORG



If you are new to the parish, you can enjoy formed.org for free by signing up as part of the parish subscription. All you need is your email, then select the option for an "institution or parish" subscription and search for Our Lady of Mercy Harborcreek.

## QUESTION OF THE WEEK

Question-of-the-Week Winner for the week of Nov. 1 was **David Parente, grade 5**, who knew that Our Lady of Mercy has a sister parish relationship with a parish in Mexico.

### Religious Education Calendar

There is no religious education classes Nov. 23-28 for the Thanksgiving holiday. Classes will resume on Nov. 30.



### Youth Ministry Core Team



The OLM Youth Ministry Core Team is looking to add to its roster. The YM Core Team is a fun, energetic group of adults over the age of 18 that meet once a month to plan and implement different Youth Ministry activities such as retreats, youth events, service projects and fellowship opportunities. If you are interested in joining the team, send an email to Katie at [youthminister@ourladyofmercychurch.org](mailto:youthminister@ourladyofmercychurch.org) or give her a call in the Parish Office.

### Soup For The Advent Soul

Mark your calendar for Sunday, Dec. 5 from noon to 2:00 for our annual parish celebration of Advent. Warm up with a homemade soup lunch and time with parish friends. Kids will enjoy a craft and game and...., maybe a visit from a special guest.



### Soups Needed

We are looking for parish soup makers to bring a crock pot of homemade soup to our Advent celebration on Dec. 5. If you can help, please add your name to the list on the easel in the Gathering Space.

Please let us know what kind of soup you will be bringing so that we can have labels prepared.



## Celebrating the 75<sup>th</sup> Anniversary of Our Lady of Mercy Parish



Making significant contributions to the spiritual development of the parish were the religious women who joined the staff of the parish as directors of the religious education program. Prior to their arrival, the program had been staffed and run by lay volunteers. Sr. Grace Madonia, SSJ became the director of Religious Education in September 1979. She was followed by Sr Lois Bulishak, OSB from 1982-1985 and Sr. Rosemary O'Brien, SSJ, who joined the staff from 1985-1995.



## Social Justice

"We cannot know whether we love God, although there may be strong reasons for thinking so, but there can be no doubt about whether we love our neighbor. Be sure that, in proportion as you advance in charity, you are increasing your love of God."

St. Teresa of Avila

### Coming Soon Thanksgiving Prayer Cubes

Simply roll the cube at mealtime and recite the prayer that comes up. It's a fun way to involve your family and learn new prayers. A gift for you from OLM's Small Christian Communities. These will be available after all Masses next weekend. (some assembly required)



### Smile for Our Lady of Mercy



To link to our Amazon Smile charity listing visit: <http://smile.amazon.com/ch/25-1563277>. If you shop Amazon please consider using Amazon Smile and naming "Our Lady of Mercy – Harborcreek" as your charity.

## Youth THANKS-Gathering

Sunday, Nov. 21, 3:00-5:00 p.m.  
at Our Lady of Mercy Parish

*"Let us love,  
not in word or speech,  
but in truth and action."  
1 John 3:18*

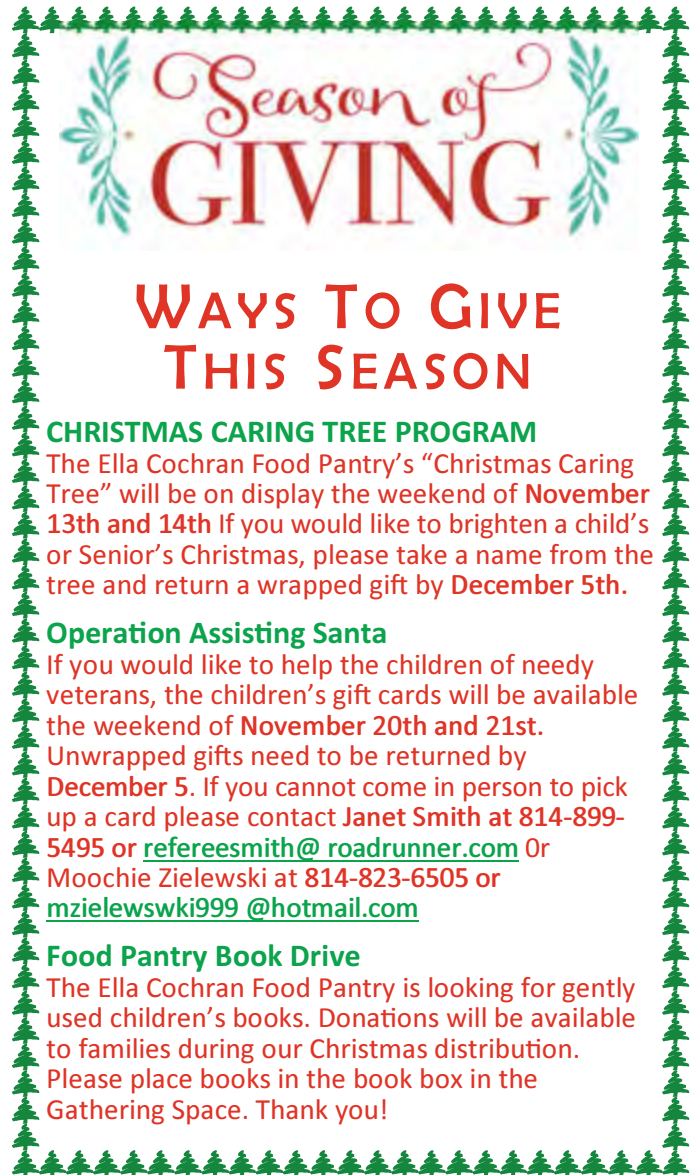
A Christian fellowship event for Harborcreek youth, grades 6-12

Everyone is welcome for fellowship, fun, service, and of course, food!

Theme: "Faith in Action"

Guest Speaker: Andy Kerr, chaplain at the Erie City Mission, will share about his ministry at the Mission and how we can help. The afternoon's service projects will support the City Mission, the Ella Cochran Food Pantry, and the Soldiers and Sailors Home.

Sponsored by First Presbyterian, Faith Lutheran, Our Lady of Mercy, and South Harborcreek United Methodist Churches.



# Season of GIVING

## WAYS TO GIVE THIS SEASON

### CHRISTMAS CARING TREE PROGRAM

The Ella Cochran Food Pantry's "Christmas Caring Tree" will be on display the weekend of November 13th and 14th. If you would like to brighten a child's or Senior's Christmas, please take a name from the tree and return a wrapped gift by December 5th.

### Operation Assisting Santa

If you would like to help the children of needy veterans, the children's gift cards will be available the weekend of November 20th and 21st. Unwrapped gifts need to be returned by December 5. If you cannot come in person to pick up a card please contact Janet Smith at 814-899-5495 or [refereesmith@roadrunner.com](mailto:refereesmith@roadrunner.com) Or Mochie Zielewski at 814-823-6505 or [mzielewski999@hotmail.com](mailto:mzielewski999@hotmail.com)

### Food Pantry Book Drive

The Ella Cochran Food Pantry is looking for gently used children's books. Donations will be available to families during our Christmas distribution. Please place books in the book box in the Gathering Space. Thank you!

### Domestic Violence Support

Do you know someone who is living through domestic violence? You can help. Call the National Domestic Violence Hotline for resources and support 800-799-SAFE (7233) {TTY 800-787-3224} or find help on line at [thehotline.org](http://thehotline.org).



### Ink Jet Fundraiser

Please donate used black or color ink jet cartridges to the Religious Education ministry. Previously refilled and remanufactured cartridges can not be redeemed, nor can laser toner cartridges.

### Parish Quilt

New parish families are encouraged to decorate a quilt square for our parish quilt that hangs on the back wall of the worship space. You may find a square in the basket on the table next to classroom #1. After you decorate your family square please return it to the parish office.



# A Letter from the East Erie Deanery

Dear Parishioners,

We, priests and deacons of the East Erie Deanery parishes, are excited to share with you an initiative to strengthen the vibrancy of our Catholic presence in our communities. Our common aim is creating and securing a hopeful future for our Catholic faith.

Following the lead of Bishop Persico, who began the Pastoral Planning Process in 2015, we have decided it is time to engage the process of pastoral planning to examine ways we can minister more effectively and ensure the presence of our Catholic faith for generations to come. From the start of this process, we want to emphasize that the work of pastoral planning rightfully belongs to all of us. This includes individual parishioners, parish leadership, and pastors from all our parish communities. As we embark on this journey together, we want you to know that we are committed to ensuring that the planning process involves all parts of our East Erie Deanery. Right now, we are at the point of brainstorming, and we need your help.

As a starting point we would like to share with you some common elements of our hopes, vision, and priorities. First, every parish provides unique and invaluable ministries and resources in our respective neighborhoods and beyond. Second, the planning process did not start with predetermined agendas or decisions as to how our initiative will unfold or conclude. Third, we do not have any preestablished timelines that we are considering. Finally, we recognize that our present situation is not viable in the years to come. It is our hope that this initiative will reinvigorate the expression and experience of our Catholic faith, inspiring us to be more effective in evangelizing and ministering throughout the East Erie Deanery.

What might our future look like? After much dialogue, we identified six

characteristics that we believe are important for ensuring a vibrant Catholic presence into the future: collaboration, outreach, faith formation, ecumenism, transparency, and sustainability. In other words, we must cultivate a willingness to work with one another (collaboration) and we must create an atmosphere of hospitality that welcomes others into our communities and ministries (outreach) and includes other Christians who may not share our Catholic faith (ecumenism). We must continue to demonstrate a commitment to grow in our faith throughout our life's journey (faith formation). Finally, our communities need to be open and honest in our communication and dialogue (transparency) when considering how to best manage our facilities, our ministries, and our communities with an eye ever fixed on the future (sustainability).

With that as the background, we are asking you to participate in a brief survey. We need your thoughts and observations to move forward with open and honest dialogue as we plan together for our future. Please take a few moments to fill out an initial informational survey. You can fill out the survey online (<https://form.jotform.com/212985812553058>) or you can fill out a paper survey at your parish.

In closing, our decision to engage in the planning process as a deanery is a sign of our common conviction that working together as parishes will ensure that the faith that was given to us will continue to be handed on to future generations. We are grateful for your consideration and prayerful participation as we embark on this important journey together.

Sincerely,

*Fr. Malthaner, Fr. Hahn, Deacon Coan,  
Fr. Brooks, Fr. Glover, Fr. Kriegel, Deacon  
Sobrowski, Fr. Magraw, Fr. McCormick,  
Fr. Trocchio, Fr. Stockton, Fr. Ritchie,  
Fr. Jacquel, Fr. Murphy*



**LYNCH**  
**Home Medical Supply**  
**TIMOTHY P. LYNCH**  
 Parishioner, Owner, Certified Orthotic Fitter  
 Lift Chairs & Scooters  
 Wound Care • Walkers • Wheelchairs  
 Commodes & Much More  
 4020 Main St. • Lawrence Park  
**899-3636**  
[www.lynychmedical.com](http://www.lynychmedical.com)

Where There's Always  
 Something **GROWING** on!

**Stan's**  
**GARDEN CENTER**

Jim Skarzenski & Bob Rocky - Parishioners

East  
 5001 Buffalo Road  
 Erie, PA 16510  
**899.5424**

West  
 5341 West Lake Road  
 Erie, PA 16505  
**835.6960**

**William D. Elkin**  
**Funeral Home**  
 65 South Lake St. • North East  
**725-4511**  
*Timothy P. Elkin, F.D.*  
*William D. Elkin, F.D.*  
 Pre-Arrangements Available

**PRICHARD**  
**CHIROPRACTIC**  
**OFFICES**

 6095 Buffalo Road  
 Harborcreek, PA  
**899-1966**  
 DR. LOREN J. PRICHARD  
 DR. SCOTT V. PRICHARD

  
**Brevillier**  
**Village**

Ball Pavilion  
 Short Term Rehab  
 Long Term Nursing  
 Care

Barnabas Court  
 Licensed Personal  
 Care, Residency &  
 Independent Living.

5416 East Lake Road  
 Erie, PA 16511  
**814-899-8600**  
[www.brevillier.org](http://www.brevillier.org)

Conrad House  
 Independent Living

"Your Computer  
 Professional"

  
**JDL**  
 Computers

**NEW SYSTEMS**  
**USED • REPAIRS**  
 "WE SERVICE ALL BRANDS"  
**898-8300**  
*Jerry & Dee Law - Parishioners*

**JDLCOMPUTERS.COM**

**OLLINGER**  
**PLUMBING, HEATING**  
**& AIR CONDITIONING**



Residential • Commercial  
 Quality Installations & Service  
**899-2809**

**FIDDLE INN**  
 HARBORCREEK, PA  
 "Home of the EVERYTHINGS"

6615 Buffalo Road  
**814-899-9005**  
[www.diningverse.com/fiddleinn](http://www.diningverse.com/fiddleinn)

*We've Missed You!*  
 Welcome Back to Mass

*Stay connected to our faith community no matter where you are  
 by signing up to get our bulletin delivered straight to your email!*

[www.ParishesOnline.com](http://www.ParishesOnline.com)

**HARBORCREEK**  
 AUTO  
**Gallery**

[www.harborcreekautogallery.com](http://www.harborcreekautogallery.com)  
 6850 Buffalo Rd. • **814-315-4051**  
 Harborcreek, PA

- Sales
- PA Inspections
- Notary
- Detailing

**DUSCKAS - TAYLOR**  
 FUNERAL HOME & CREMATION SERVICES, INC.

 5151 BUFFALO RD.  
 ERIE, PA 16510

ROBERT D. TAYLOR, SUPERVISOR  
 814-315-0911

[WWW.DUSCKAS-TAYLORFUNERALHOME.COM](http://WWW.DUSCKAS-TAYLORFUNERALHOME.COM)

**AVAILABLE FOR A LIMITED TIME!**

**ADVERTISE HERE NOW!**

Contact **Tim Weir** to place an ad today!  
**tweir@4LPi.com** or **(800) 477-4574 x6568**

**OUR LADY OF MERCY CATHOLIC CHURCH**  
*Membership Form*

Name \_\_\_\_\_

Address \_\_\_\_\_

City/Zip \_\_\_\_\_

Phone \_\_\_\_\_

Change of Address     Moving out of the Parish

New Parishioner

To start the new member process please call the parish office at 899-5342; or request a phone call by filling out this form and returning it to the office by mail or collection basket.